



A subsidiary of the RWL Water Group - USA

## AERATION



AEROMIX offers a complete line of aerators, mixers, diffusers and aeration systems for improving the quality of water and wastewater. Our aerators and aeration equipment are used worldwide for municipal and industrial wastewater treatment and lake rejuvenation. Let our technical experts assist you in proper sizing, layout, and operation of your next aeration or mixing system.

**TORNADO® Aerator**

**HURRICANE® Aerator**

**TWISTER® Aerator**

**TYPHOON® Aerator**

**ZEPHYR® IAF System**

**CYCLONE® Diffuser**

**RIPTIDE™ Mixer**

**MONSOON® Aerator**

# AEROMIX Aeration Products:



## TORNADO® Aerator

- Self-Aspirating and Blower Assisted models available
- Available from 2 to 100HP (1.5 to 75 kW)
- All stainless steel construction, grease lubricated bearings, and solid shaft vibration-free design
- Ideal for activated sludge basins, sludge holding tanks, oxidation ditches, lagoons, ice control, and post aeration applications



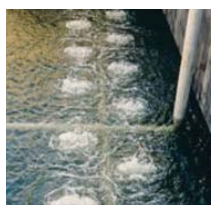
## ZEPHYR® IAF System

- Induced Air Flotation (IAF) System
- Available from 1 to 10HP (.75 to 7.5 kW)
- Stainless steel construction
- Separates and removes fats, oils, and floatable solids
- Applied at pulp and paper mills, petrochemical, meat, vegetable and oil processing facilities



## HURRICANE® Aerator

- Submersible Aspirating Aerator/Mixer
- Available from 5 to 100HP (3.75 to 75 kW)
- Customized air diffuser lengths for most efficient aeration and mixing
- Effective in aerobic digesters, sludge holding tanks, flow equalization tanks, sequencing batch reactors, and post aeration



## CYCLONE® Diffuser

- Coarse Bubble Diffusers
- Unique bubble shearing action for high oxygen transfer efficiency
- Stainless steel construction
- Perfect for activated sludge basins, aerobic digesters, aerated grit chambers, sludge storage tanks, basin channels, and post-aeration basins



## TWISTER® Aerator

- Low Speed Surface Aerator
- Available from 2 to 150HP (1.5 to 112 kW)
- Intense air-to-water mixing for high oxygen transfer
- Wear resistant and durable construction
- Ideal for highly loaded basins, oxidation ditches, leachate treatment and activated sludge applications



## RIPTIDE® Mixer

- Direct Drive Surface Mixer
- Available from 2 to 30HP (1.5 to 22.5 kW)
- Directional mixing just below the surface for high basin mixing efficiency
- Weedless design propeller
- Used in industrial applications for wastewater treatment



## TYPHOON® Aerator

- Floating High Speed Aerator
- Available from 2 to 200HP (1.5 to 150 kW)
- High pumping rates with a low trajectory for intense air-to-water mixing and excellent oxygen transfer rates
- Minimal maintenance required
- Perfect for high rate aeration applications in basins and lagoons



## MONSOON® Aerator

- Floating Paddlewheel Aerator
- Available from 5 to 30HP (3.75 to 22.5 kW)
- High oxygen transfer and strong horizontal mixing
- 100% stainless steel construction for the ultimate corrosion resistance
- Effective in lagoons, oxidation ditches, and equalization basins

To learn more about the AEROMIX aeration solution best suited for your application, call 800-879-3677 or visit [www.aeromix.com](http://www.aeromix.com)



A subsidiary of the RWL Water Group - USA

AEROMIX is a world leader in water and wastewater treatment equipment. With decades of proven reliability and unique installations in 75 countries, AEROMIX equipment is depended upon by prominent organizations across the globe. AEROMIX offers full lines of treatment systems, aeration equipment and solar powered equipment. Please visit [www.aeromix.com](http://www.aeromix.com) to learn more.

Rental units available. Covered by United States Patent Nos. 5,160,667 - 4,741,870 - 5,868,091 - 7,048,260B2 - 5,183,596 - 6,634,626B2 - 5,762,833 - D324,279. © 2011, AEROMIX - A subsidiary of the RWL Water Group - USA



AEROMIX

7135 Madison Ave. West  
Minneapolis, MN 55427 U.S.A.  
Ph: 800-879-3677, 763-746-8400  
Fax: 763-746-8408  
e-mail: [aeromix@aeromix.com](mailto:aeromix@aeromix.com)  
web: [www.aeromix.com](http://www.aeromix.com)