



Prefabricated Wastewater Package Plant, Leadville, CO.

AEROMIX WASTEWATER PACKAGE PLANT REVAMPS CLIMAX MINE IN COLORADO

PROJECT BACKGROUND

The Climax Mine in Leadville, Colorado represents one of the largest and most concentrated deposits of molybdenum in the world. At the time, the plant was not equipped with a water treatment system ensuing limited access to a municipal sewer system. The necessity for a wastewater treatment plant that could provide minimal maintenance requirements, flexibility in size and ease for future expansion was critical. The greatest challenge was integrating a treatment system into the existing facility while maintaining its treatment capacity.

THE FACTS

LOCATION: Leadville, Colorado

APPLICATION: Prefabricated Wastewater Package Plant

DATE OF INSTALLATION: December 2008

TOTAL PROJECT COST: Not Disclosed

PROBLEM: A remote mine with no access to municipal sewer system.

SOLUTION: Install Prefabricated Wastewater Package Plant.

EQUIPMENT: Prefabricated Wastewater Package Plant

BUYER: Climax Mine, Leadville Colorado

ABOUT THE WASTEWATER PACKAGE PLANT

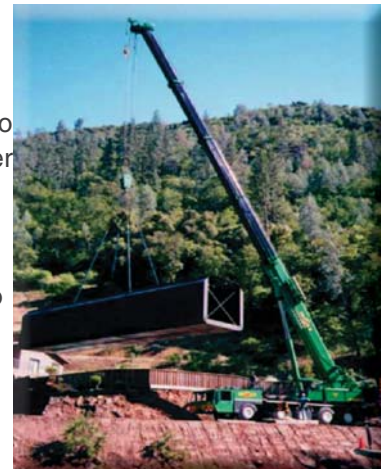
- Welded steel tank design with special coating for extended life.
- Completely assembled, pre-plumbed and pre-wired for immediate and low cost installation and start-up.
- Process design produces excellent effluent with little operator attention.

ABOUT AEROMIX

AEROMIX - A subsidiary of the RWL Water Group, USA is a world leader in water and wastewater treatment equipment. AEROMIX offers full lines of treatment systems, aeration, equipment, and solar-powered equipment. Please visit us at www.aeromix.com to learn more.

AEROMIX SOLUTIONS

Through careful evaluation of what the Climax Mine desired, AEROMIX was able to design a robust, easy to operate wastewater treatment plant to meet the effluent requirements. Moreover, the system treats a daily flow of the 34,500 gallons per day of wastewater while reducing BOD levels to the desired effluent at the mine.



Leadville, Colorado

HOW IT WORKS

The AEROMIX Packaged Wastewater Treatment System is a biological wastewater treatment system designed and engineered specifically for small complexes of people who are temporarily or permanently residing outside the reach of municipal waste disposal systems.

The Packaged Plants are compact and self-contained to meet your effluent requirements. In addition, they are portable and reusable and can be installed both below and above grade with low installation expenses. The size is determined by the amount of flow and can be installed in virtually any location.



Wastewater Treatment Package Plant